

---

Muni

---



# UNIFORMS

---

CORPORATE

HOSPITALITY

AVIATION

HEALTHCARE

INDUSTRIAL

---

[www.muniuniforms.com](http://www.muniuniforms.com)







MUNI

## Our Story

In the heart of bustling cities and amid the chaos of modern life, there exists a sanctuary of serenity known as MUNI. Inspired by the tranquil wisdom of the ancient Rishi munis, we embarked on a journey to redefine corporate attire, blending timeless elegance with inner peace.

Our story begins with the humble frog, revered in many cultures as a symbol of transformation and introspection. In our logo, it sits in a poised meditation stance, embodying the essence of tranquility amidst the noise of the world. MUNI isn't just a brand; it's a philosophy—a reminder to embrace stillness in the midst of chaos.

Our garments are meticulously crafted to evoke a sense of calm confidence, empowering individuals to navigate the corporate landscape with grace and authenticity. Each stitch tells a tale of mindfulness, echoing the wisdom of the Rishi munis who sought harmony within themselves and the world around them.

At MUNI, we believe that true success lies not just in outward achievement, but in the peace we cultivate within. As you don our attire, may you embody the spirit of the Rishi muni—poised, centered, and ready to make a difference in the world, one mindful step at a time.

A stylized, handwritten signature in black ink, appearing to read "Hilpa B".

- From the desk of Managing Director



## **FAIR TRADE**

OUR TRADE VALUE IS BASED ON ETHICS OF TRANSPARENCY, ACCOUNTABILITY, FAIR TRADING PRACTICE, NO CHILD LABOUR OR FORCED LABOUR IN OUR COMPANY ENSURING GOOD WORKING CONDITION, PROVIDING CAPACITY BUILDING, RESPECT FOR ENVIRONMENT. OUR VALUE STAND STRONG ON OUR GIVEN PRINCIPLE.

## **SUSTAINABLE DEVELOPMENT**

MUNI MEETS THE NEED OF THE PRESENT TEXTILE WORLD WITHOUT COMPROMISING THE ABILITY OF FUTURE GENERATION TO MEET OUR NEEDS. OUR GOAL IS ALL AROUND DEVELOPMENT OF HUMAN, SOCIAL ECONOMICAL AND ENVIRONMENTAL DEVELOPMENT THE SUSTAINABLE DEVELOPMENT GOAL ARE THE BLUE PRINT TO ACHIEVE A BETTER AND MORE SUSTAINABLE FUTURE OF ALL.







## RESPONSIBLE MANUFACTURING

WITH A RESPONSIBLE MANUFACTURING APPROACH, WE WORK ACROSS ON OUR OPERATIONS FROM RAW MATERIAL SOURCING TO YARN MANUFACTURING, FABRIC MANUFACTURING, WAREHOUSING, GARMENT MANUFACTURING AND FROM DESIGN TO DELIVERY - TO BRING A POSITIVE CHANGE.

### AZO FREE DYES ( APPROVED BY OEKO-TEX)

ORGANIC DYES IS A SOLUTION PROVIDER OFFERING A BROAD RANGE OF HIGH QUALITY DYES. SPECIALITY CHEMICALS IS USED IN A DIVERSE BASE IN OUR PROCESS HOUSE FOR BEST QUALITY FABRIC.



STANDARD  
100



### BREATHABLE FABRICS

OUR FABRIC ARE MADE WITH A RANGE OF PC / COTTON/ VISCOSE YARN. COTTON AND VISCOUS FIBRE ARE BREATHABLE YARN AND THERE FOR SUITABLE FOR ALL WEATHER, BREATHABLE FABRIC ALLOW MOISTURE TO PASS THROUGH, THUS MAKING IT MORE COMFORTABLE TO WEAR ALL SEASON



## Serving 150+ Clients Globally

Explore the collaborations that have shaped MUNI Uniforms' journey, working together to bring tranquility and elegance to the corporate world. Our partnerships have allowed us to redefine corporate uniforms and company uniform design, offering a diverse range of uniforms for companies. From creating bespoke professional uniforms and office uniforms to designing corporate uniform designs that embody serenity, each collaboration has enriched our mission.

Radisson BLU

**HCL**

**SIEM**

दैनिक भास्कर



**Supr**

**NATIONAL HERALD**

◆ 卐 ◆ 卐  
**ROSEATE**  
HOTELS & RESORTS



**cna**

**EFYGROUP**

**FORT**



**MENS**

**wework**



**Dainik Jagran**

**reme**



**hindustantimes**

**AGGIO**



**THE  
ePLANE  
CO.**



**EMBASSY**

**TUNE**

**Outlook**

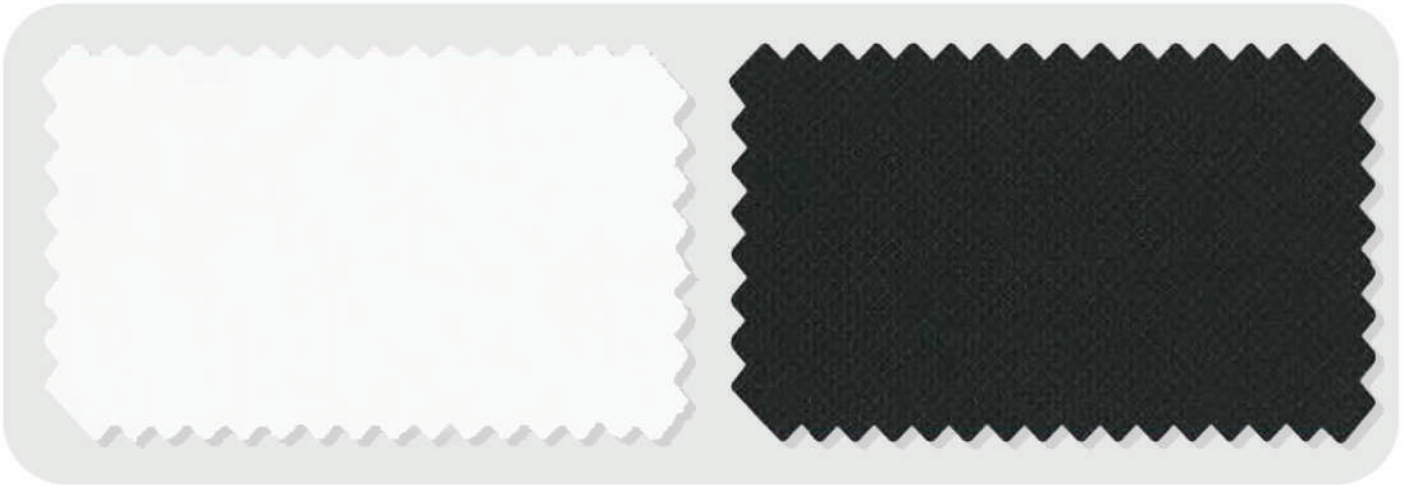
**TAXMANN**

Muni

WHITE CLASSIC COLLAR  
SHIRT F/S  
(MU-SH-WH-CL-FS)

TROUSER  
BLACK  
(MU-TR-BK)





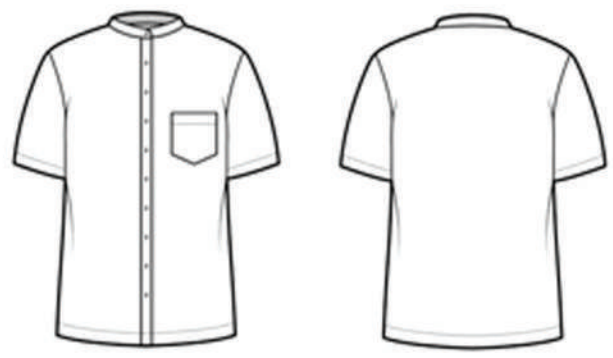
WHITE CLASSIC COLLAR SHIRT F/S  
(MU-SH-WH-CL-FS)



WHITE CHINESE COLLAR SHIRT F/S  
(MU-SH-WH-CC-FS)



WHITE CLASSIC COLLAR SHIRT H/S  
(MU-SH-WH-CL-HS)



WHITE CHINESE COLLAR SHIRT H/S  
(MU-SH-WH-CC-HS)



BLUE COLOUR SHADE OPTIONS

WHITE CLASSIC COLLAR  
SHIRT F/S  
(MU-SH-WH-CL-FS)

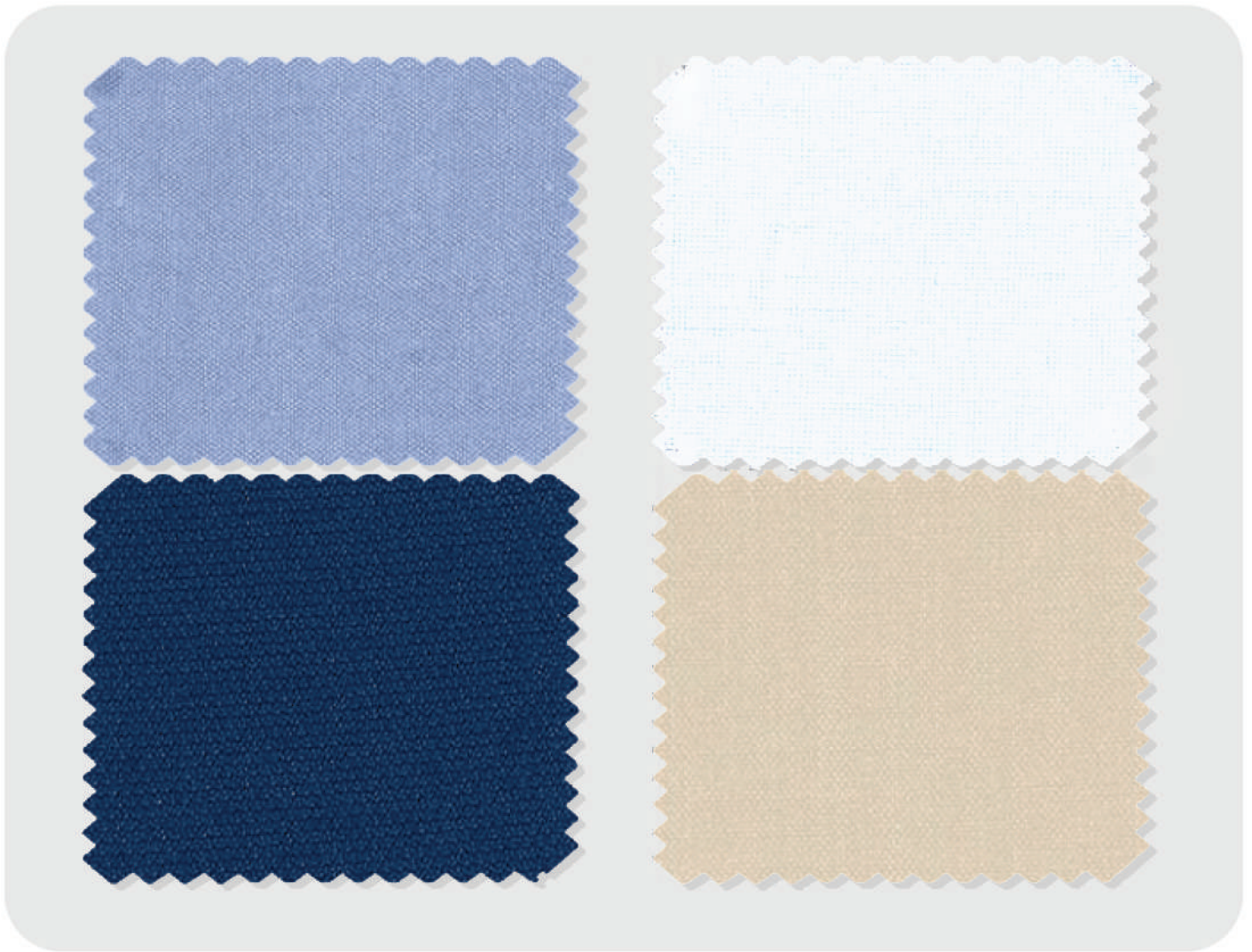
BLUE SHIRT CLASSIC  
COLLAR F/S  
(MU-SH-BL-CL-FS)

TROUSER  
BLUE 1  
(MU-TR-BL1)

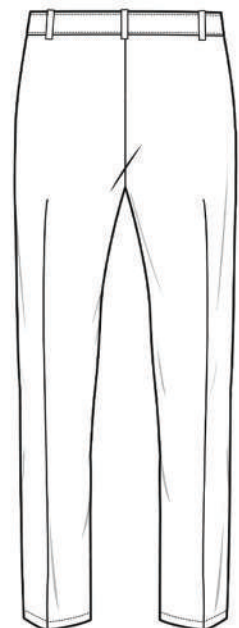
TROUSER BEIGE  
(MU-TR-BG)







MORE SHADES AVAILABLE



TROUSER BLACK  
(MU-TR-BL1)

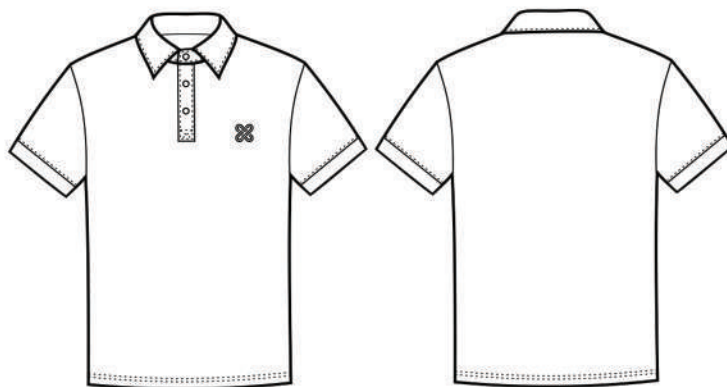




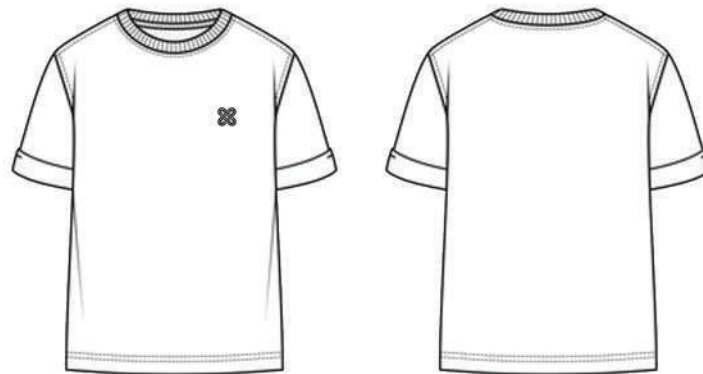
**WHITE ROUND COLLAR T-SHIRT H/S**  
(MU-TSH-WH-RC-HS)

**WHITE CLASSIC COLLAR T- SHIRT H/S**  
(MU-TSH-WH-CL-HS)





WHITE CLASSIC COLLAR T- SHIRT H/S  
(MU-TSH-WH-CL-HS)



WHITE ROUND COLLAR T-SHIRT H/S  
(MU-TSH-WH-RC-HS)



BLUE COLOUR SHADE OPTIONS



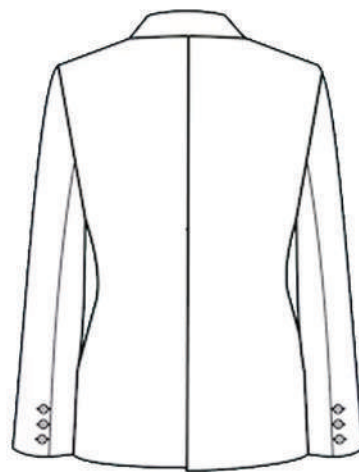
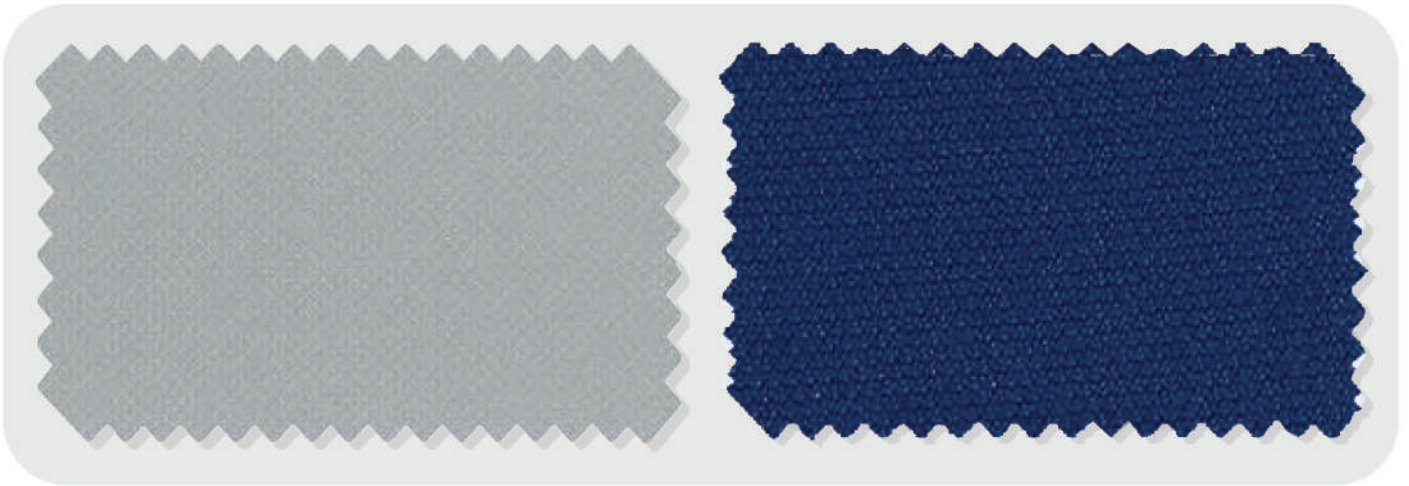
GREY SUIT  
(MU-SU-GR)



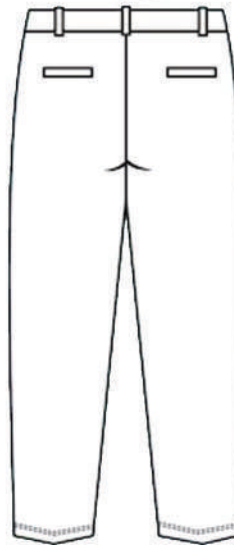
BLUE SUIT 1  
(MU-SU-BL1)







TROUSER BLACK  
(MU-TR-BL1)



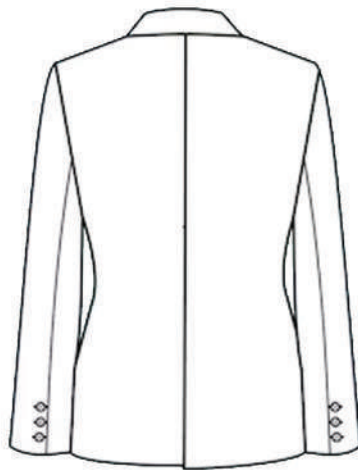
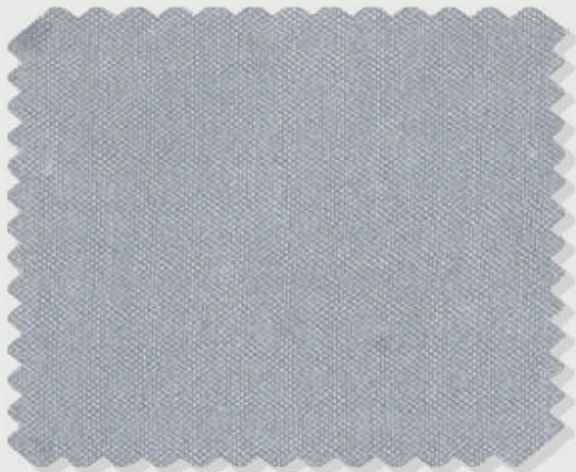
MORE SHADES AVAILABLE

**BLAZER GREY  
FEMALE**  
(MU-SU-GR-FE)

**BLAZER BLUE 1**  
(MU-BL-BL1)







BLAZER BLUE 1  
(MU-BL-BL1)



MORE SHADES AVAILABLE

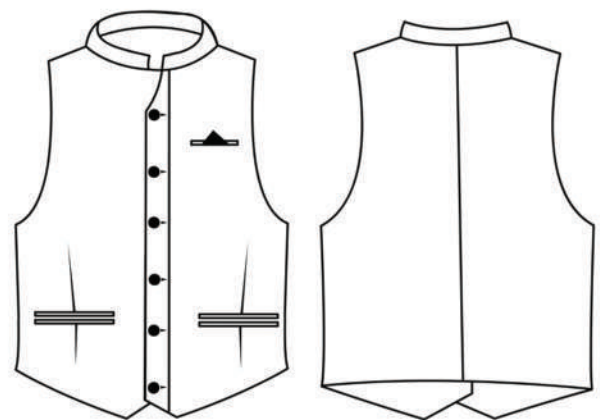
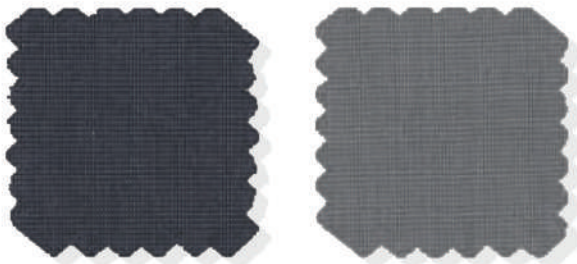
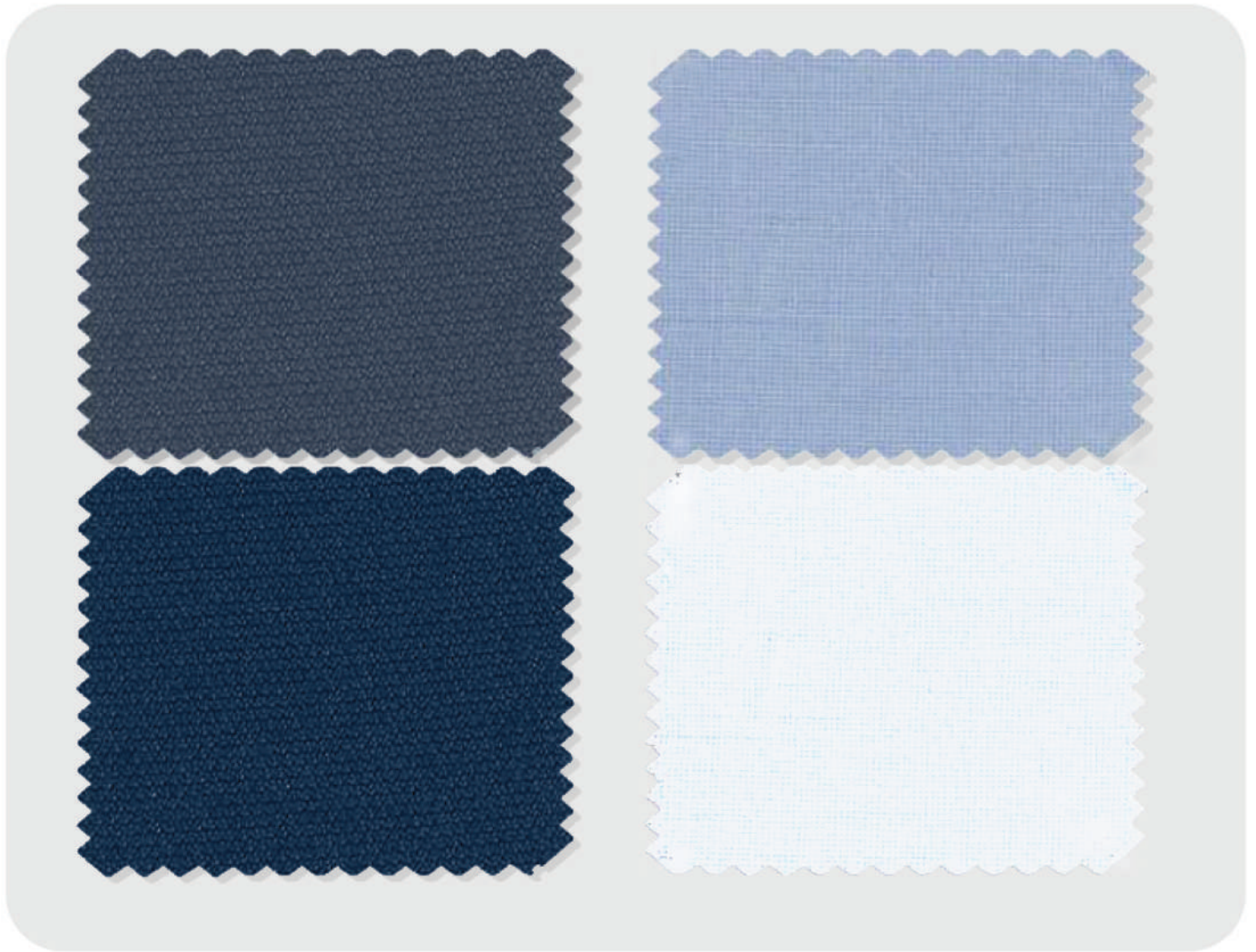




WAIST COAT ROUND COLLAR  
(MU-WC-NV-RC)

WAIST COAT V COLLAR  
(MU-WC-BL-VC)





**WAIST COAT V COLLAR**  
(MU-WC-BL-VC)

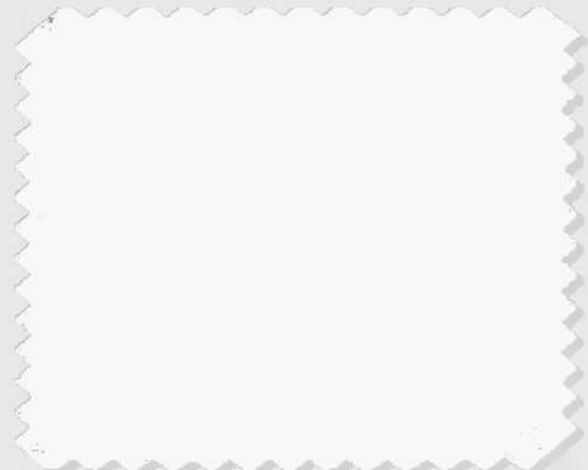
MORE SHADES AVAILABLE



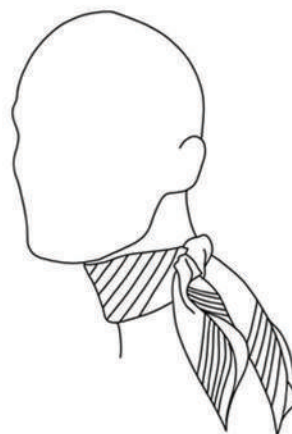
TIE  
(MU-TI-BL-WH)

SCARF  
(MU-SC-BL)





**TIE**  
(MU-TI-BL-WH)



**SCARF**  
(MU-SC-BL)



MORE SHADES AVAILABLE





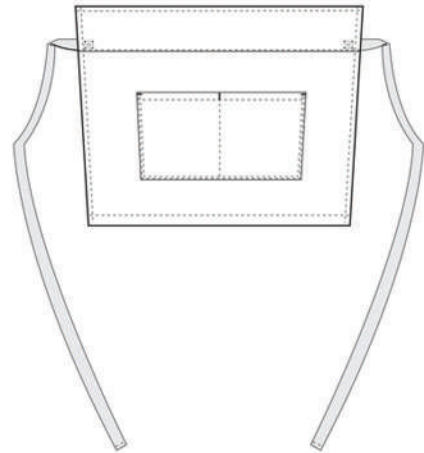
**SALON APRON**  
(MU-SL-BL)

**WHITE LADIES CLASSIC COLLAR SHIRT**  
(MU-SH-FM-WH-CL-FS)

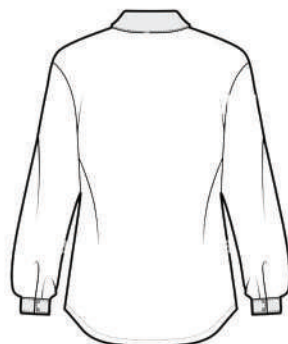




WHITE CHINESE COLLAR SHIRT H/S  
(MU-SH-WH-CC-HS)



SALON APRON  
(MU-SL-BL)



WHITE LADIES CLASSIC COLLAR SHIRT F/S  
(MU-SH-FM-WH-CL-FS)



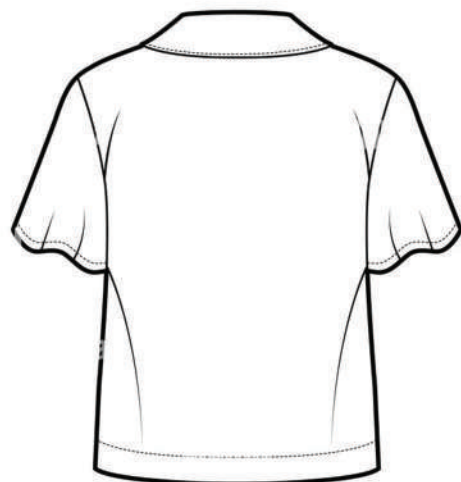
MORE SHADES AVAILABLE





HOUSEKEEPING UNIFORM  
(MU-CA-BL-1P)





WHITE LADIES CLASSIC COLAR OVERSIZED SHIRT  
H/S  
(MU-SH-FM-WH-CC-HS)



MORE SHADES AVAILABLE



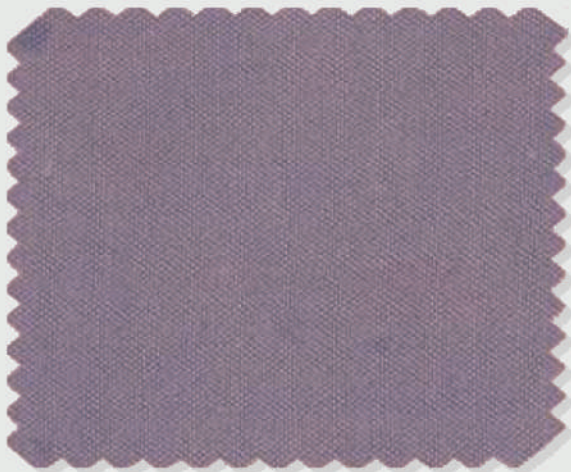
Muni

CHEF COAT  
(MU-CC-WH)

CHEF APRON  
(MU-AP-BG)







CHEF COAT  
(MU-CC-WH)



CHEF APRON  
(MU-AP-BK)



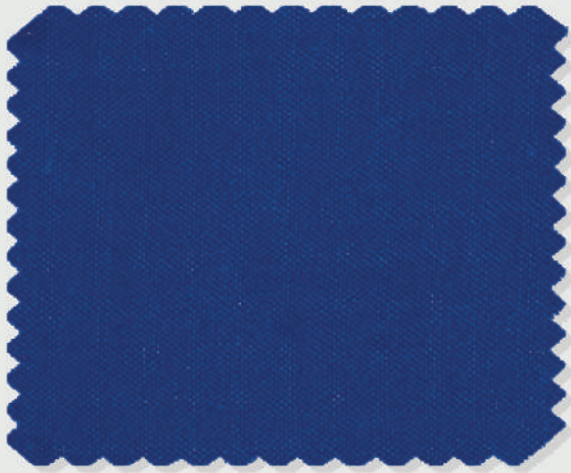
MORE SHADES AVAILABLE

Muni

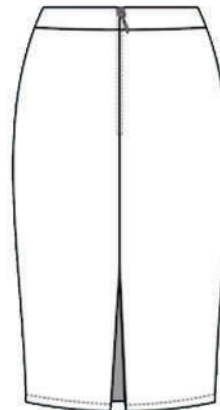
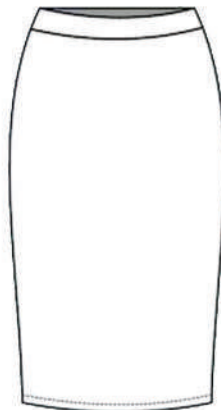
AIR HOSTESS UNIFORM  
(MU-AH-BL-2P)







**AIR HOSTESS UNIFORM**  
(MU-AH-BL-2P)



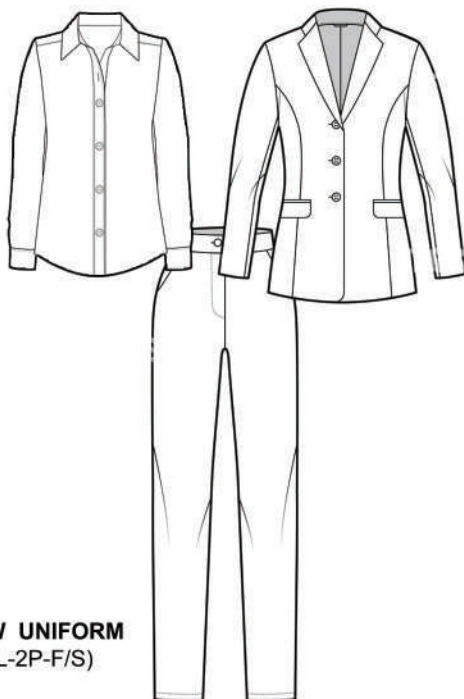
MORE SHADES AVAILABLE



**CABIN CREW UNIFORM**  
(MU-CC-BL-2P-H/S)

**CABIN CREW UNIFORM**  
(MU-CC-BL-2P-F/S)





**CABIN CREW UNIFORM**  
(MU-CC-BL-2P-F/S)



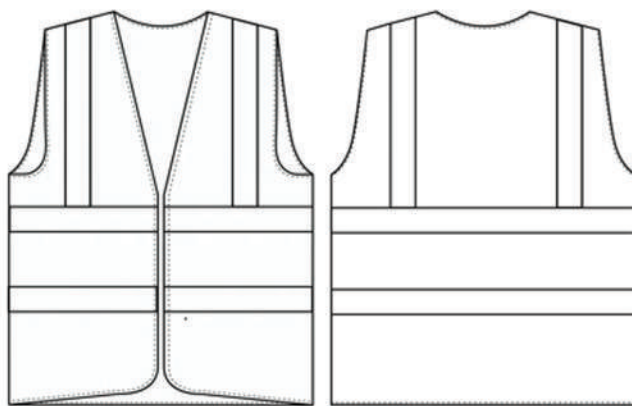
MORE SHADES AVAILABLE





**REFLECTIVE VEST H/S**  
(MU-RV-OR-H/S)





**REFLECTIVE VEST H/S**  
(MU-RV-OR-H/S)



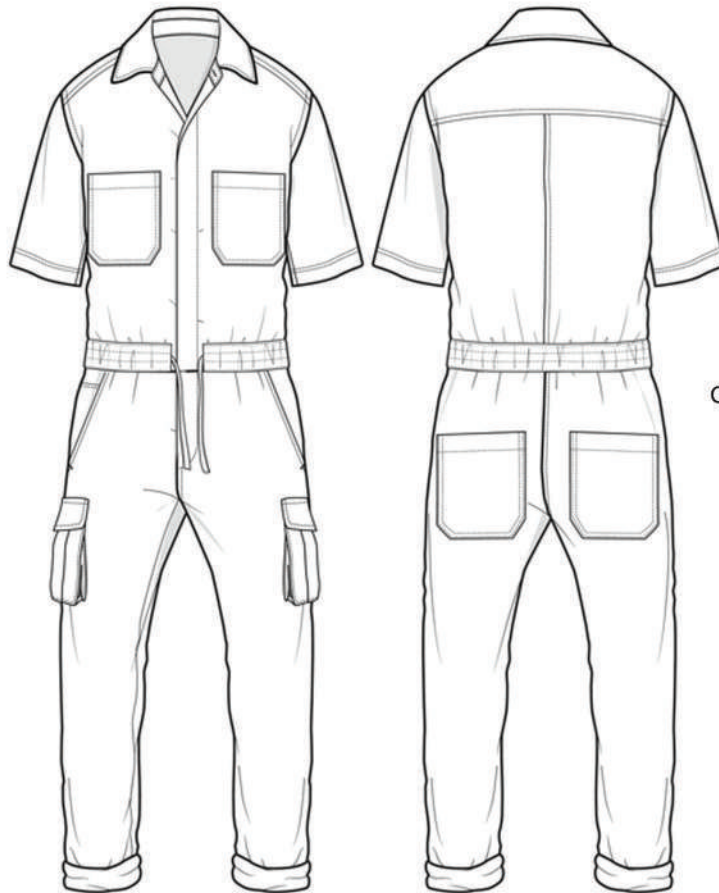
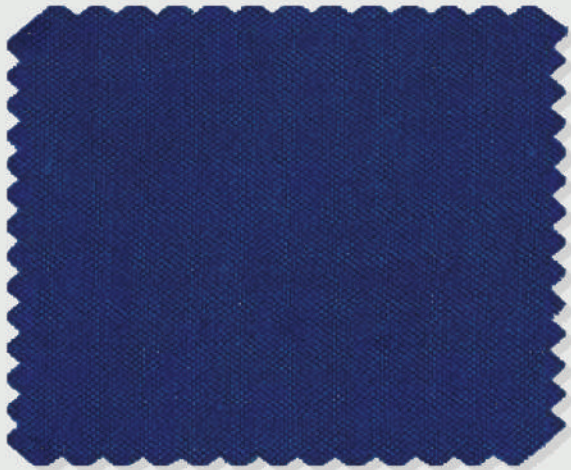
MORE SHADES AVAILABLE

Muni

COVERALL ONE PIECE  
(MU-CA-BL-1P)







COVERALL ONE PIECE  
(MU-CA-BL-1P)



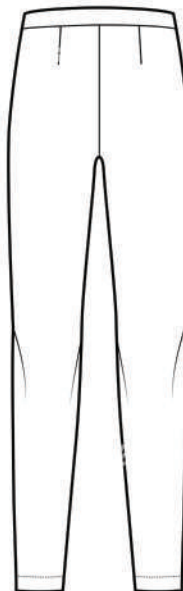
MORE SHADES AVAILABLE

Muni

SPA UNIFORM  
(MU-SP-WH-2P)







**SPA UNIFORM**  
(MU-SP-WH-2P)

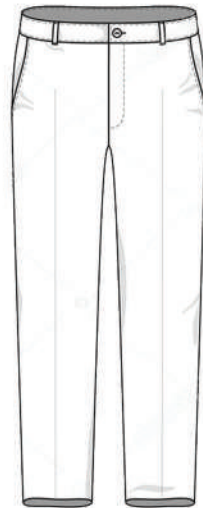
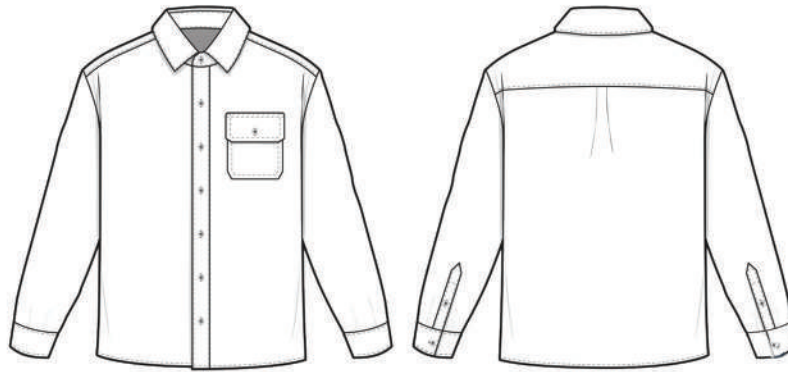
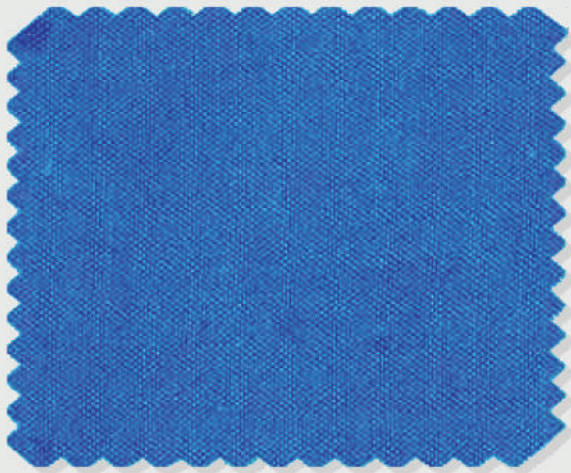


MORE SHADES AVAILABLE

**GARDENER UNIFORM**  
(MU-GU-RB-2P)







**GARDENER UNIFORM**  
(MU-GU-RB-2P)



MORE SHADES AVAILABLE



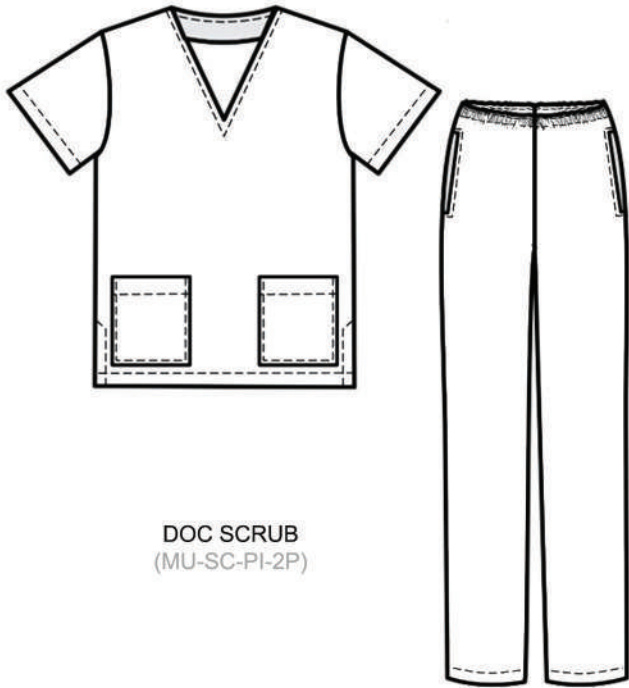
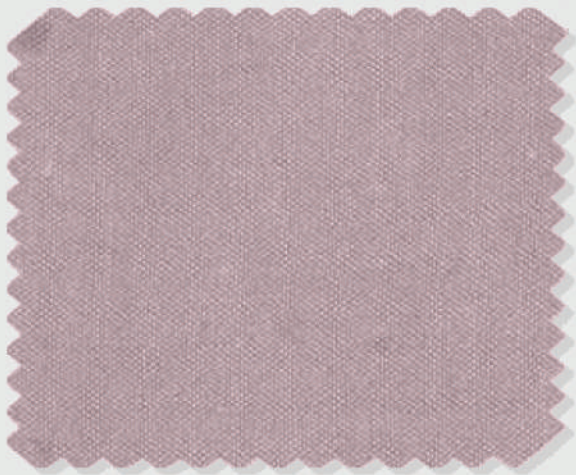
Muni

DOC LAB COAT  
(MU-CO-WH)

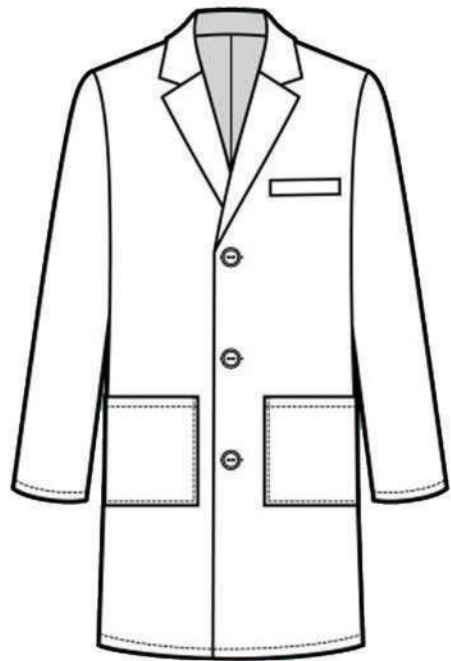
DOC SCRUB  
(MU-SC-PI-2P)







DOC SCRUB  
(MU-SC-PI-2P)



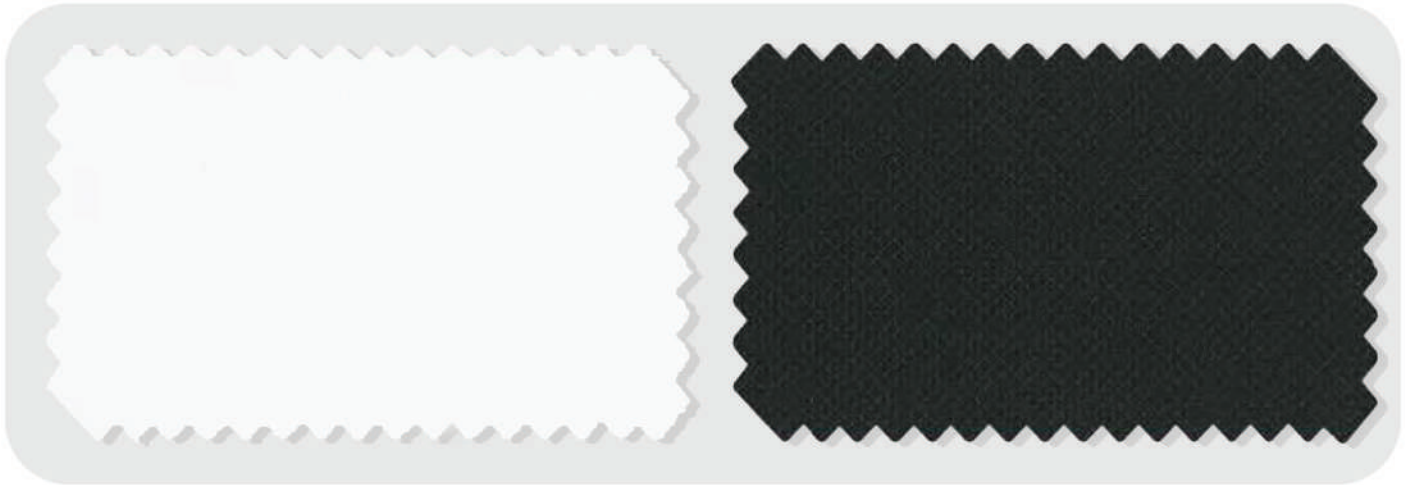
DOC LAB COAT  
(MU-CO-WH)



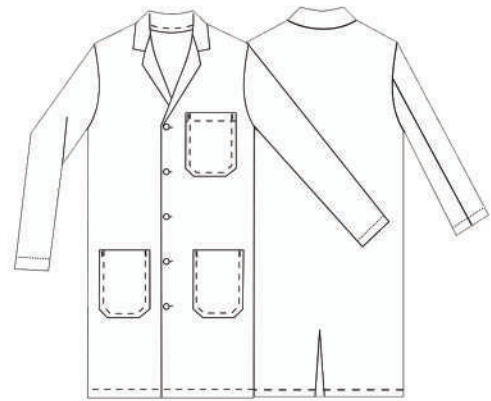
MORE SHADES AVAILABLE







**LONG LENGTH DOCTOR COAT (41")**  
(MU-CT-WH-LL-2P)



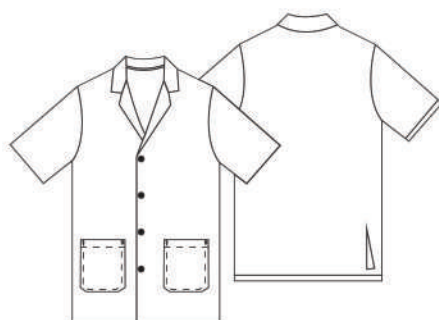
**LONG LENGTH DOCTOR COAT (41")**  
(MU-CT-WH-LL-3P)



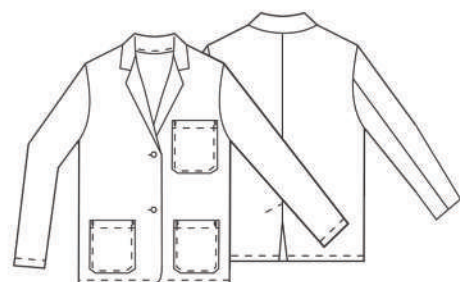
**MID LENGTH DOCTOR COAT (35")**  
(MU-CT-WH-ML-2P)



**MID LENGTH DOCTOR COAT (2P) (35")**  
(MU-CT-WH-ML-3P)



**CONSULTATION DOCTOR COAT (30")**  
(MU-CT-WH-SL-2P)

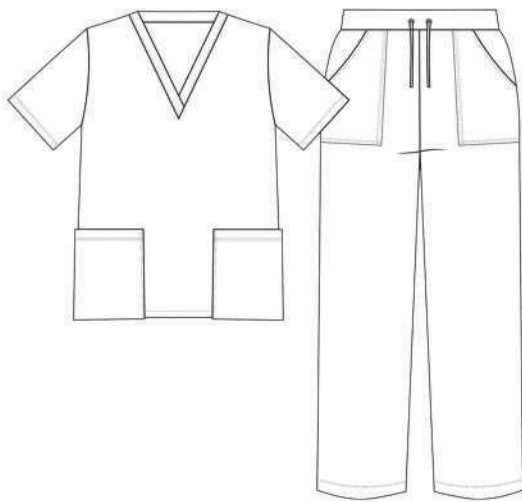


**CONSULTATION DOCTOR COAT (30")**  
(MU-CT-WH-SL-3P)

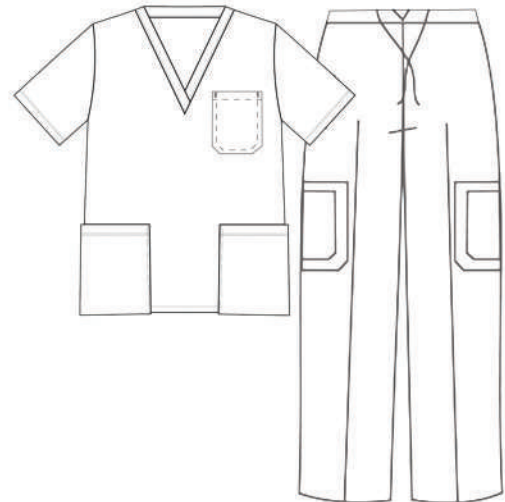
Muni







2 POCKET SCRUB SUIT  
(MU-SS-CL-HS-2P)



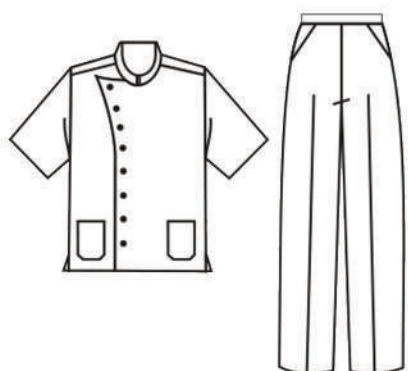
3 POCKET SCRUB SUIT  
(MU-SS-CL-HS-3P)



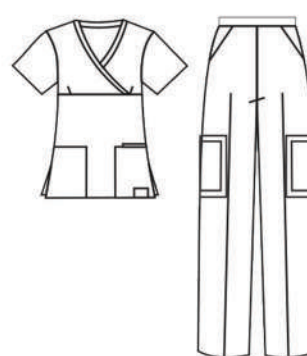
MORE SHADES AVAILABLE



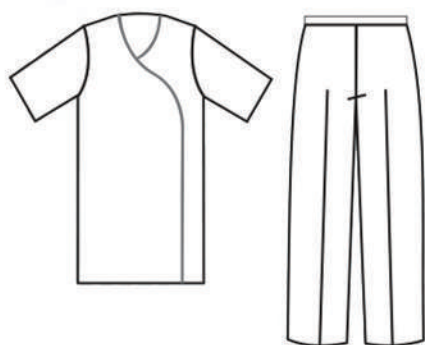




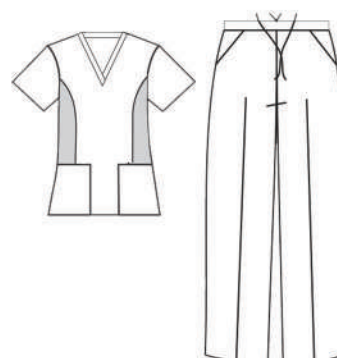
WOMAN'S CROSS OVER COAT WITH BUTTON  
(MU-CO-BT-HS)



WOMAN'S MOCK WRAP SCRUB SUIT  
(MU-MW-SS-HS)



WOMAN'S CROSS OVER LONG SCRUB SUIT  
(MU-CO-LL-HS)



WOMAN'S NOTCH NECK FLEX SCRUB SUIT  
(MU-NN-SS-HS)



MORE SHADES AVAILABLE

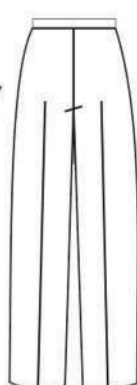
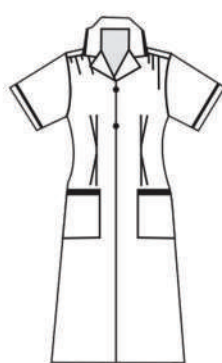
Muni



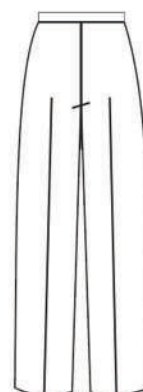




NURSE UNIFORM WAIST LENGTH  
(MU-SH-WH-CL-HS)



LONG COLLARD NURSE DRESS  
(MU-SH-WH-CL-FS)



LONG FLARED NURSE DRESS  
(MU-SH-WH-CL-FS)

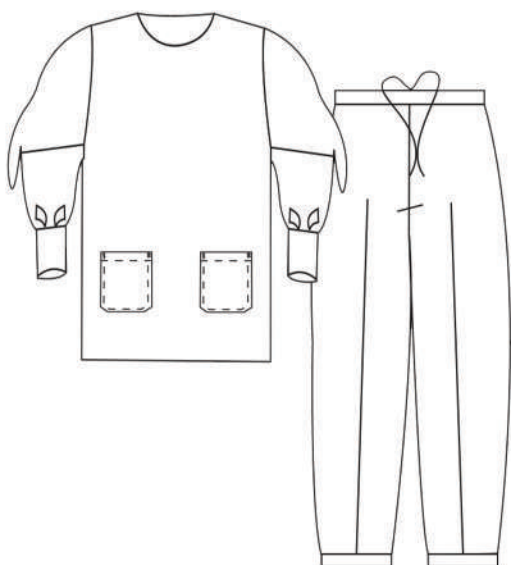


MORE SHADES AVAILABLE

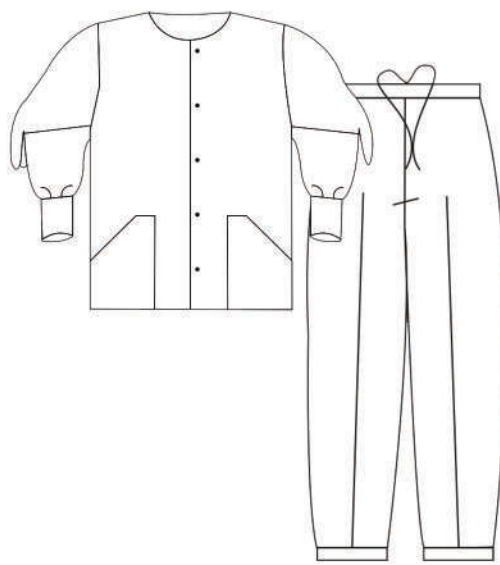
Muni







LONG SLEEVE SCRUB SUIT WITH RIB  
(MU-SS-RB-FS)



LONG SLEEVE SCRUB SUIT WITH BUTTONS  
(MU-SS-RB-FS-BT)



# Why

## MUNI Uniforms?

### **Commitment to Quality**

MUNI prioritizes quality in every uniform, adhering to government regulations and industry standards to ensure garments meet the highest expectations for durability and design. Our uniforms undergo rigorous testing to guarantee top-tier performance, giving our clients peace of mind. This commitment to quality is central to everything we do, ensuring long-lasting satisfaction.

### **Sustainability Focus**

MUNI integrates eco-friendly practices into its operations, aligning with the global shift towards sustainability and delivering environmentally responsible products to meet growing demand. We source sustainable materials and implement energy-efficient production methods to reduce our environmental footprint.

Contact us today:  
[www.muniuniforms.com](http://www.muniuniforms.com)  
[contact@megabags.net](mailto:contact@megabags.net)  
+91-9910677841



### **Strict Compliance with Specifications**

MUNI ensures every garment surpasses industry expectations by following all required specifications and continually improving manufacturing processes and quality control. We work tirelessly to stay updated on evolving regulatory requirements. This dedication helps us maintain consistent quality across all product lines, ensuring reliability for every client.

### **Innovation and Durability**

MUNI invests in innovative manufacturing techniques, producing uniforms that are stylish, resilient, and capable of enduring daily wear while maintaining a pristine appearance. By integrating cutting-edge technology into our processes, we create uniforms that stand out in both form and function.

### **Adherence to Industry Best Practice**

MUNI stays ahead of corporate attire trends by aligning with industry best practices, delivering top-notch uniform solutions that reflect the latest standards and designs. We continuously research and innovate to ensure that our offerings remain at the forefront of corporate wear fashion.

### **Tailored Corporate Attire Solutions**

MUNI collaborates with clients to create uniforms that reflect their brand identity and values, ensuring uniforms enhance their professional image while meeting practical needs. We provide personalized design consultations to craft unique uniforms that resonate with each client's vision.

# #muni



---

Office Premises No. C-24, DSIDC Kirti Nagar Industrial Area, New Delhi, Delhi, 110015 |  
No.: +91-9910677841 | +91-9810739465 | Website: [www.muniuniforms.com](http://www.muniuniforms.com) | Email: [sb@megabags.net](mailto:sb@megabags.net)

---